

CAROL PERLINGEIRO

height 177 cm · bust 86 cm · cup A/B · waist 62 cm · hips 90 cm · dress 36
shoes size 40 · hair brown · eyes brown



CAROL PERLINGEIRO

height 177 cm · bust 86 cm · cup A/B · waist 62 cm · hips 90 cm · dress 36
shoes size 40 · hair brown · eyes brown



MGM
MODELS

MGM
MODELS

CAROL PERLINGEIRO

height 177 cm · bust 86 cm · cup A/B · waist 62 cm · hips 90 cm · dress 36
shoes size 40 · hair brown · eyes brown



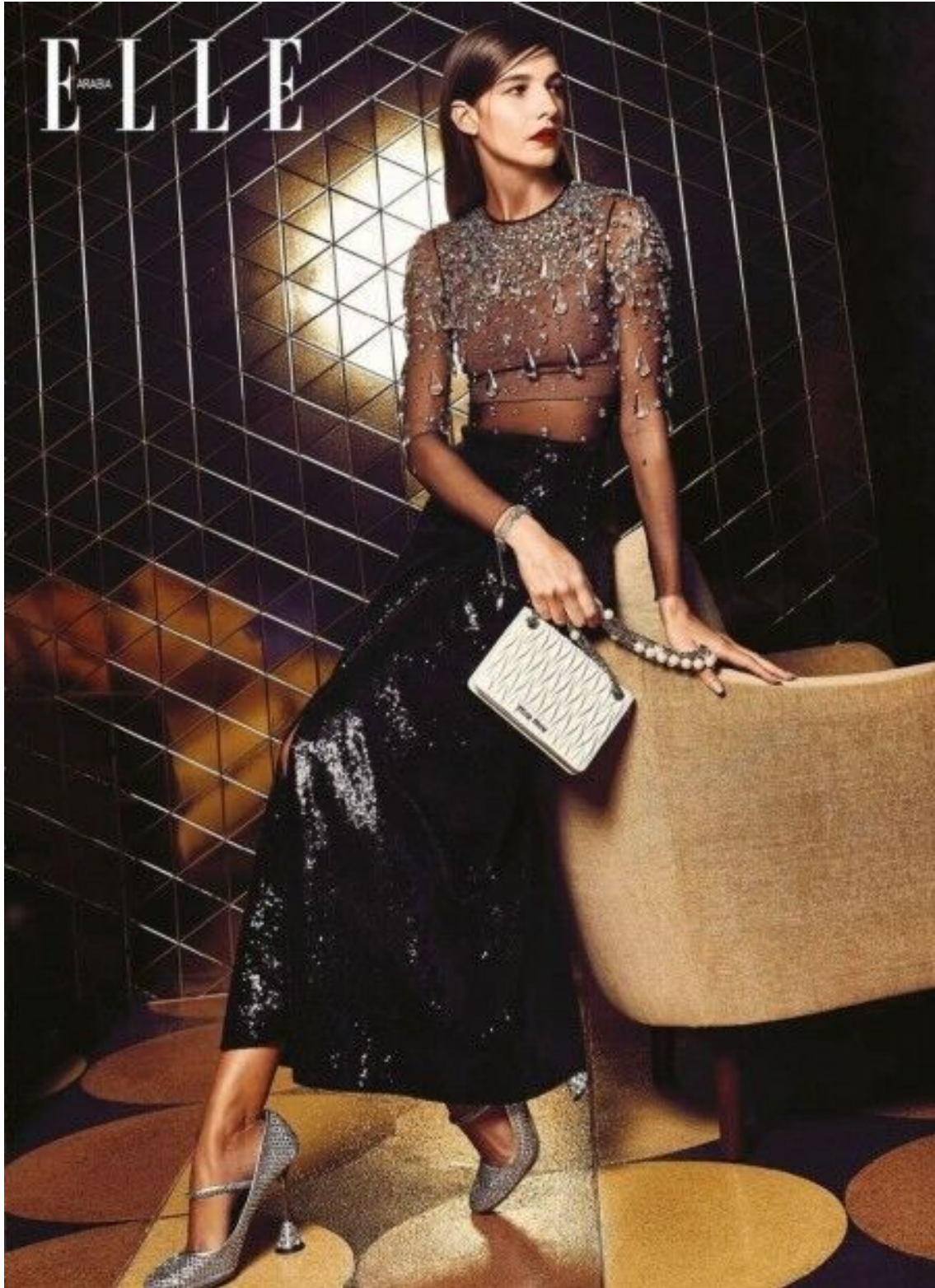
CAROL PERLINGEIRO

height 177 cm · bust 86 cm · cup A/B · waist 62 cm · hips 90 cm · dress 36
shoes size 40 · hair brown · eyes brown



CAROL PERLINGEIRO

height 177 cm · bust 86 cm · cup A/B · waist 62 cm · hips 90 cm · dress 36
shoes size 40 · hair brown · eyes brown



CAROL PERLINGEIRO

height 177 cm · bust 86 cm · cup A/B · waist 62 cm · hips 90 cm · dress 36
shoes size 40 · hair brown · eyes brown



HER:
Parmigiani Fleurier Tonda PF
Micro-Rotor in rose gold
Dress Etro
Belt Elisabetta Franchi

CAROL PERLINGEIRO

height 177 cm · bust 86 cm · cup A/B · waist 62 cm · hips 90 cm · dress 36
shoes size 40 · hair brown · eyes brown



CAROL PERLINGEIRO

height 177 cm · bust 86 cm · cup A/B · waist 62 cm · hips 90 cm · dress 36
shoes size 40 · hair brown · eyes brown

MGM
M O D E L S

MGM
M O D E L S

CAROL PERLINGEIRO

height 177 cm · bust 86 cm · cup A/B · waist 62 cm · hips 90 cm · dress 36
shoes size 40 · hair brown · eyes brown



CAROL PERLINGEIRO

height 177 cm · bust 86 cm · cup A/B · waist 62 cm · hips 90 cm · dress 36
shoes size 40 · hair brown · eyes brown



CAROL PERLINGEIRO

height 177 cm · bust 86 cm · cup A/B · waist 62 cm · hips 90 cm · dress 36
shoes size 40 · hair brown · eyes brown



CAROL PERLINGEIRO

height 177 cm · bust 86 cm · cup A/B · waist 62 cm · hips 90 cm · dress 36
shoes size 40 · hair brown · eyes brown



CAROL PERLINGEIRO

height 177 cm · bust 86 cm · cup A/B · waist 62 cm · hips 90 cm · dress 36
shoes size 40 · hair brown · eyes brown



CAROL PERLINGEIRO

height 177 cm · bust 86 cm · cup A/B · waist 62 cm · hips 90 cm · dress 36
shoes size 40 · hair brown · eyes brown



MGM
M O D E L S

MGM
M O D E L S

CAROL PERLINGEIRO

height 177 cm · bust 86 cm · cup A/B · waist 62 cm · hips 90 cm · dress 36
shoes size 40 · hair brown · eyes brown



CAROL PERLINGEIRO

height 177 cm · bust 86 cm · cup A/B · waist 62 cm · hips 90 cm · dress 36
shoes size 40 · hair brown · eyes brown



CAROL PERLINGEIRO

height 177 cm · bust 86 cm · cup A/B · waist 62 cm · hips 90 cm · dress 36
shoes size 40 · hair brown · eyes brown



CAROL PERLINGEIRO

height 177 cm · bust 86 cm · cup A/B · waist 62 cm · hips 90 cm · dress 36
shoes size 40 · hair brown · eyes brown



CAROL PERLINGEIRO

height 177 cm · bust 86 cm · cup A/B · waist 62 cm · hips 90 cm · dress 36
shoes size 40 · hair brown · eyes brown



MGM
MODELS

MGM
MODELS

CAROL PERLINGEIRO

height 177 cm · bust 86 cm · cup A/B · waist 62 cm · hips 90 cm · dress 36
shoes size 40 · hair brown · eyes brown



CAROL PERLINGEIRO

height 177 cm · bust 86 cm · cup A/B · waist 62 cm · hips 90 cm · dress 36
shoes size 40 · hair brown · eyes brown



CAROL PERLINGEIRO

height 177 cm · bust 86 cm · cup A/B · waist 62 cm · hips 90 cm · dress 36
shoes size 40 · hair brown · eyes brown



CAROL PERLINGEIRO

height 177 cm · bust 86 cm · cup A/B · waist 62 cm · hips 90 cm · dress 36
shoes size 40 · hair brown · eyes brown



September

Victoria Beckham described the rise of pastel colours perfectly when she explained: “They’re ice-cream colours, but not too sweet or saccharine.” Just how we like our ice cream then... And a delicious update for winter!

By Anja Joubert
Photographs by Higor Bastos

Mix two of the hottest trends right now – wide-legged trousers and the vertical pants stripe. Add some pops of pink and you’re all good.

Crop top, R649, Champion at SportsScene; En Pointe wide-legged pants, R1 299, and En Pointe platform slides, R799, both Puma

CAROL PERLINGEIRO

height 177 cm · bust 86 cm · cup A/B · waist 62 cm · hips 90 cm · dress 36
shoes size 40 · hair brown · eyes brown

MGM
MODELS

MGM
MODELS

CAROL PERLINGEIRO

height 177 cm · bust 86 cm · cup A/B · waist 62 cm · hips 90 cm · dress 36
shoes size 40 · hair brown · eyes brown



Italian label Kappa is on fire delivering both sportiness and a solid dose of 90s nostalgia. Its logo - of a naked man and woman sitting back to back - is legendary.

CAROL:
Crop top, R649, Kappa; bikini bottoms, R400, and track pants, R700, both Billabong

KUYAN:
Tank top, R299, Nike at Sportscene; Puma X Diamond track pants, R2 399, Puma